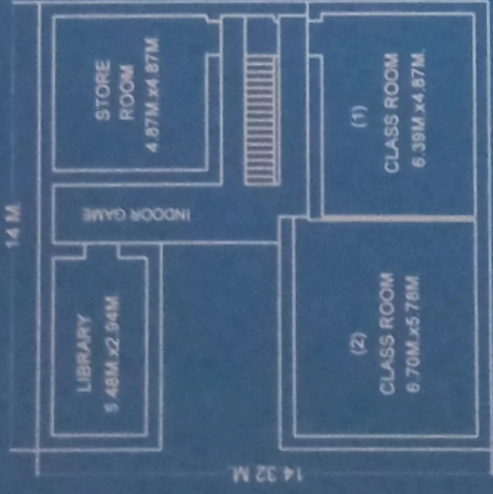
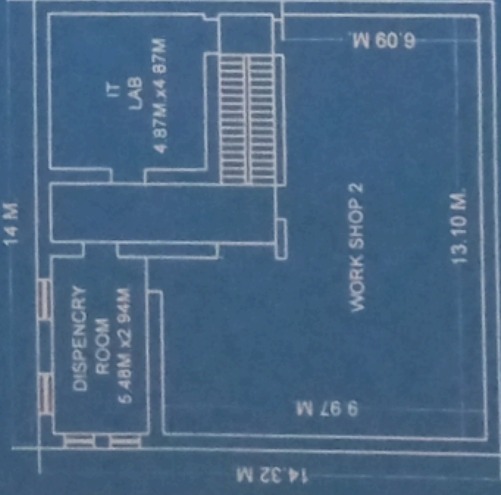


ADARSH PRIVATE INDUSTRIAL TRAINING INSTITUTE
 N.H. 65, ROOP RAJAT CIRCLE, KHIMSAR, NAGAUR (RAJ.)

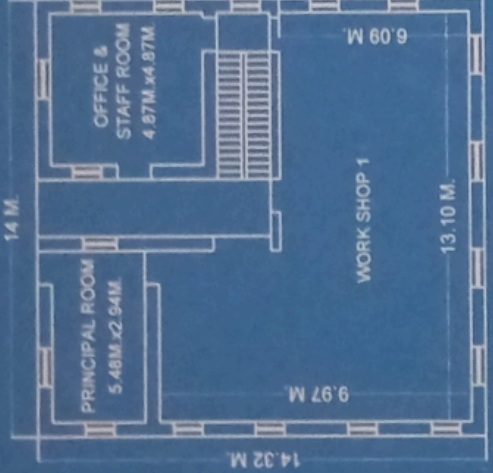
COVERD AREA = 200.48 SQMT.
 OPEN AREA = 264.03 SQMT.
 TOTAL LAND AREA = 464.51 SQMT



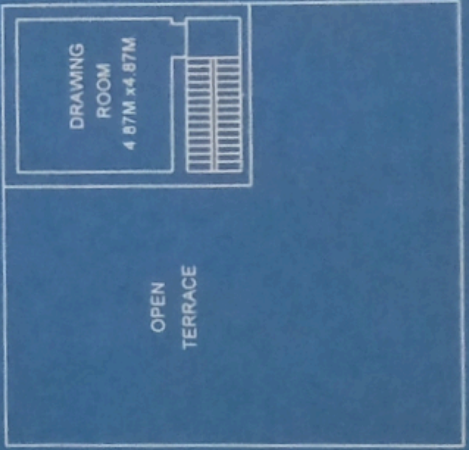
BASEMENT FLOOR PLAN



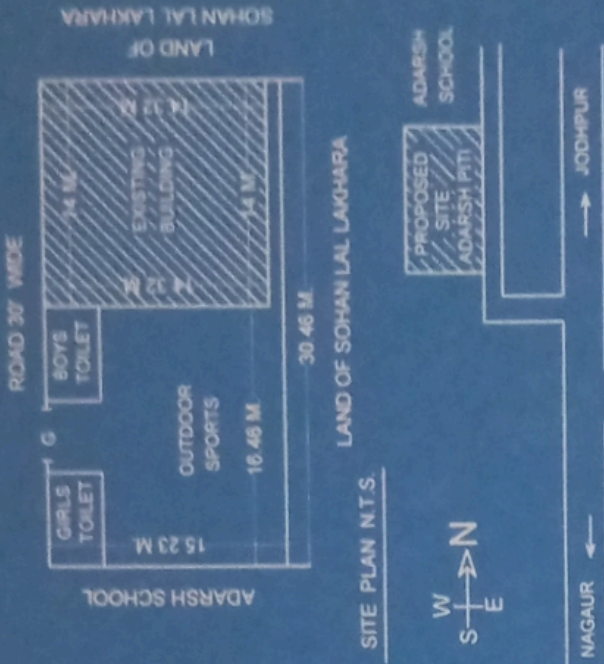
FIRST FLOOR PLAN



GROUND FLOOR PLAN



SECOND FLOOR PLAN



KEY PLAN

*Approved 13.06.2013
 Site of Khimsar City Tr.
 Nouruddin Ansari
 Director (Govt.)
 Reg.No.-02/09, NAGAUR*